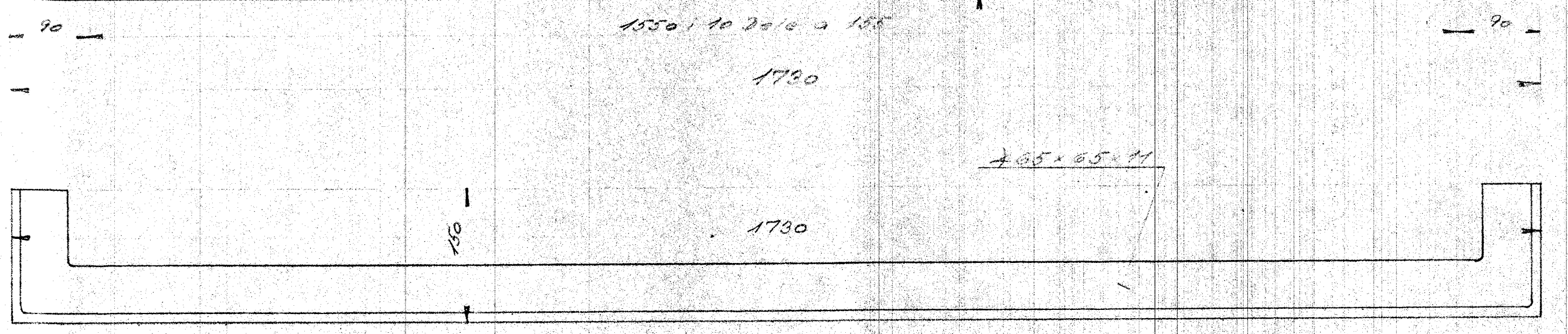
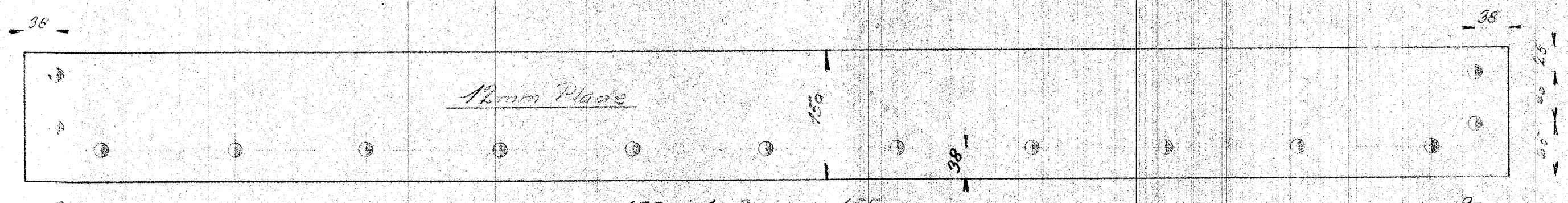
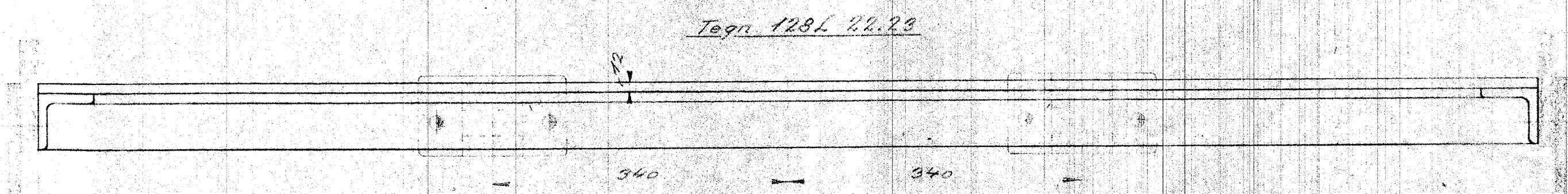
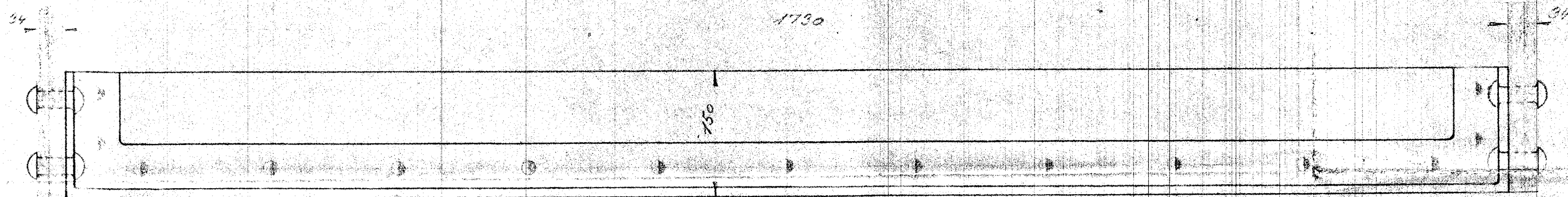
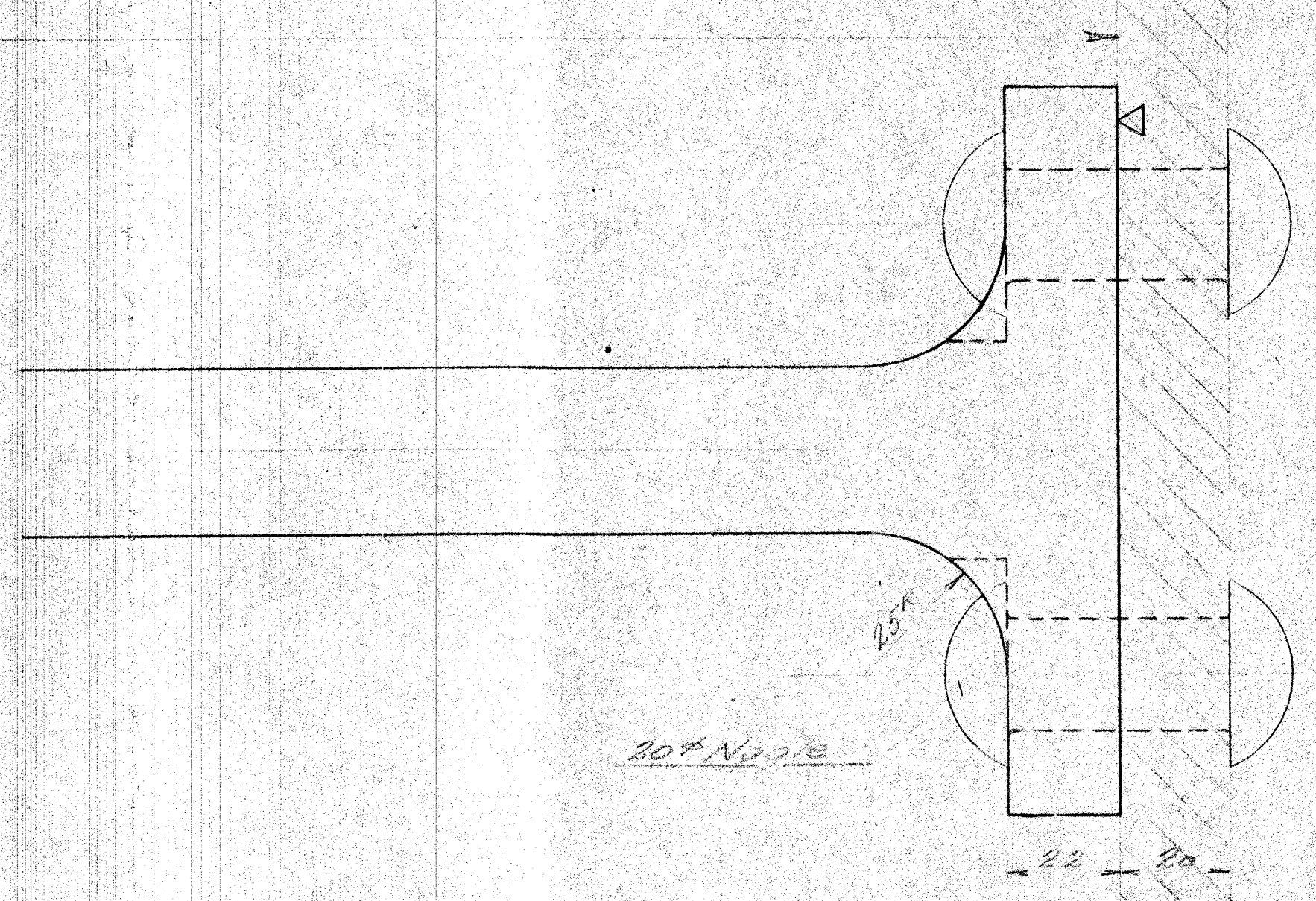
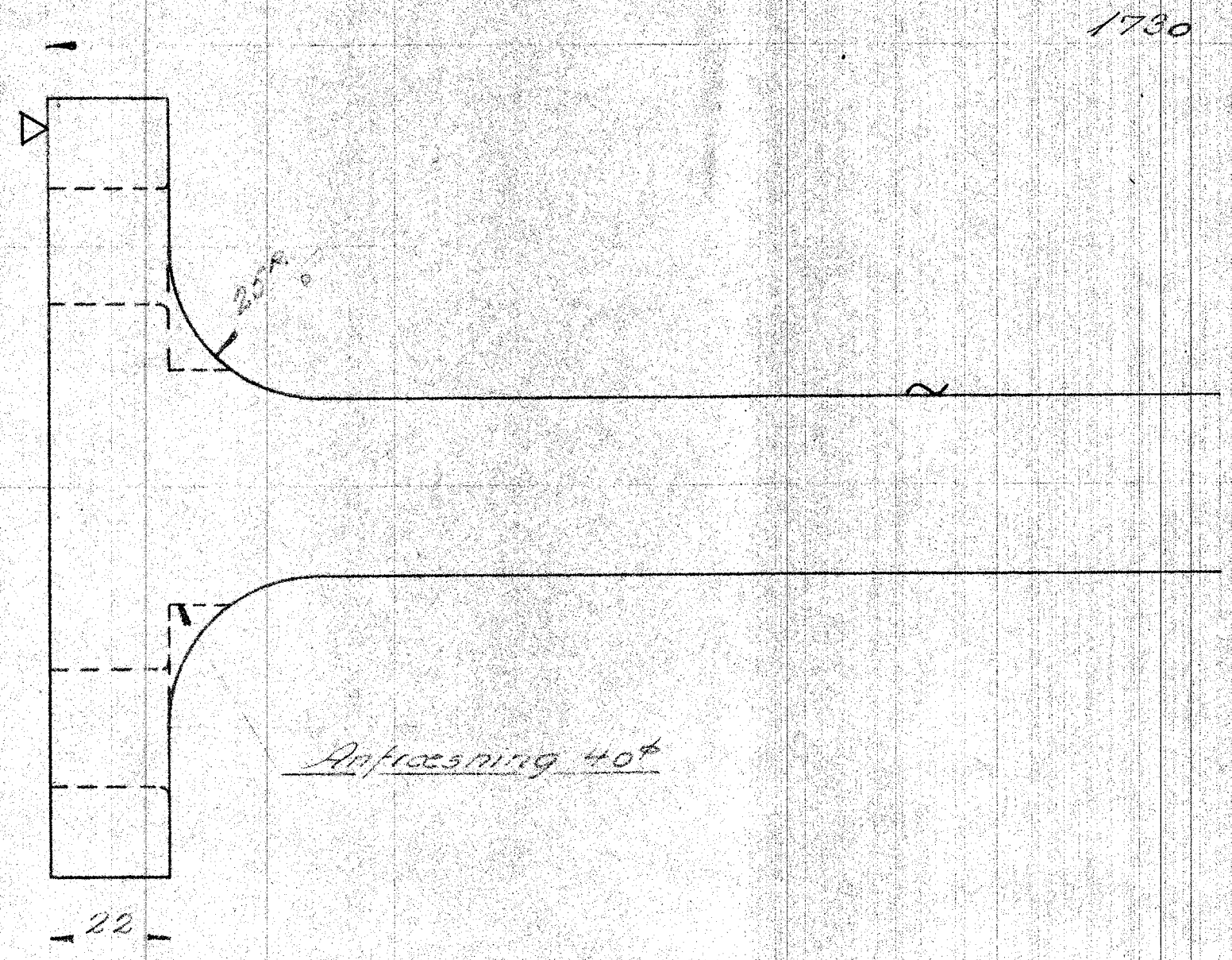
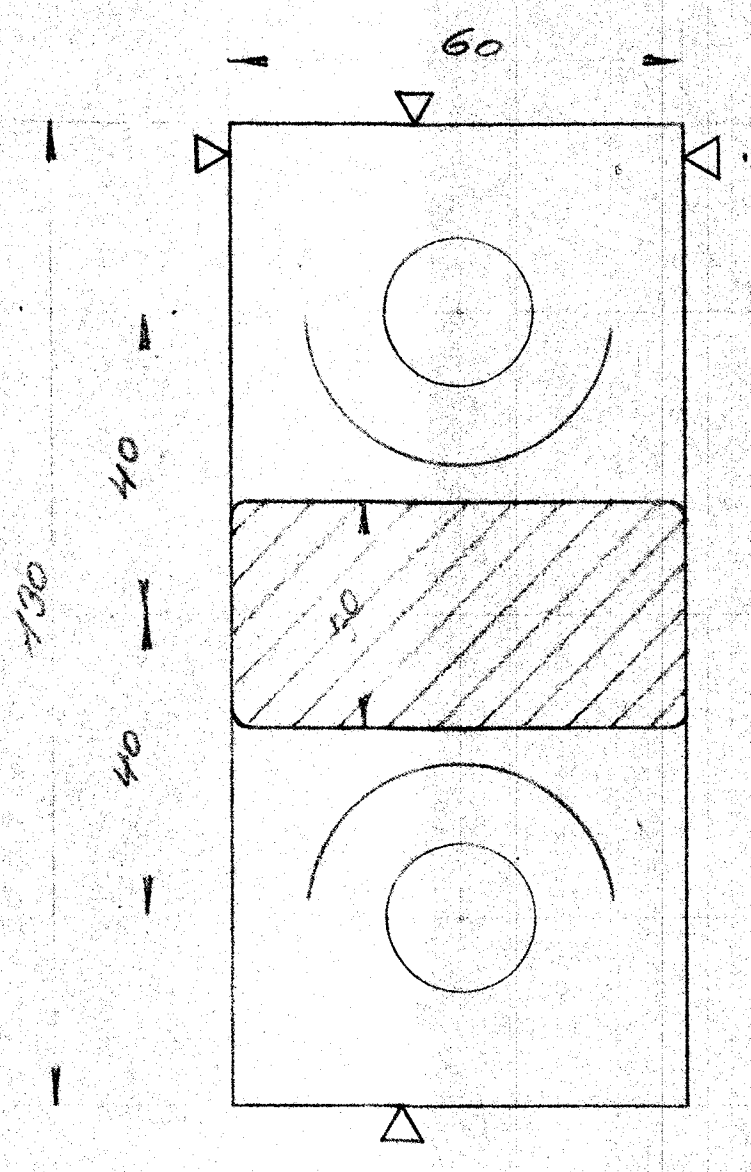


|               |  |  |  |
|---------------|--|--|--|
| STYKLISTE NO. |  |  |  |
| UCC           |  |  |  |
|               |  |  |  |
|               |  |  |  |



A/S FRICHIS APM 100

Stag mellem Remmeplader

Niesel-el. 4 volt. Motor loks

J.P. Hansen

1:1

9/8. 1933.

1:5

128L-8.08